

Dicerandra Scrub Sanctuary Draft Public Access Plan

Site Summary

The sanctuary is a 43-acre site located east of I-95 in Titusville, Brevard County, Florida. Dicerandra Scrub Sanctuary is directly adjacent to the Titusville Wellfield to the west and is located in the vicinity of a number of other conservation properties that offer similar recreational opportunities. The sanctuary can be accessed from a trailhead on Melissa Drive on the south side of the sanctuary. The site is bordered by private property to the north, east, and south. The majority of the sanctuary consists of scrubby flatwoods, and a depression marsh. This is a "Category 3 site" within the Environmentally Endangered Lands Program and as such, is a primary conservation and research site, meaning that the site will have minimal or no improvements due to the vulnerability of resources and/or the need for intensive management or restoration. Category 3 sites will provide opportunities for public access within limited areas of the site.

Passive Recreation Definition

To the extent they do not interfere with biological management goals, Environmentally Endangered Lands (EEL) sanctuaries provide a range of passive recreation opportunities for the public. As a general guideline for EEL Program management decisions, passive recreation is defined as, "a recreational type of use, level and combination of uses that do not individually, or collectively, degrade the resource values, biological diversity, and aesthetic or environmental qualities of a site."

Before developing a site public access plan, staff conducts a Public Access Site Assessment. From this assessment, the types and extent of activities can be determined with the goal to balance human use with the protection of natural resources. Items considered during the assessment include environmental, cultural, recreational and educational resources, stakeholder interests, potential conflicts, universal access, connections to other recreational resources, and potential management and/or maintenance conflicts and constraints.

Activities that allow for the quiet enjoyment of nature are conducive to EEL Program goals. Common activities on EEL sanctuaries are hiking, biking, kayaking, fishing, and equestrian use. Activities and uses that are generally not allowed on EEL sanctuaries without permit include, but are not limited to:

motorized vehicles, smoking, overnight use, commercial use, hunting/shooting sports, removal of plants or animals, relocating plants or animals, and pets.

Public Access Site Assessment

During the Public Access Site Assessment, an existing trail, rare plant species, and scrubby flatwoods and wetland habitats were identified as resources on site. Similar or complimentary recreational resources are the nearby Salt Lake Wildlife Management Area, Enchanted Forest Sanctuary, Canaveral Marshes Conservation Area, Fox Lake Sanctuary, and Wuesthoff Park. The relatively small size of the site and planned trail, and the sandy and wet soils support hiking and nature observation as permitted activities, but do not support bicycling or equestrian. There is no large body of water to support fishing or paddling as activities. Street parking, a trailhead, kiosk, and directional signage are available.

Recreational Uses and Amenities

The end of Melissa Drive will serve as a trailhead, with limited parking. There are no restrooms on site. A kiosk at a walk-through gate provides a map and information for visitors. A 0.9-mile hiking trail ([seen in Figure 1](#)) has been developed, incorporating portions of existing trails on the site. The trail layout was designed in conjunction with fire and environmental management plans, so as to minimize conflicts and maintenance constraints. The relatively short trail traverses sandy scrubby flatwoods and wetland areas that are conducive to hiking, but not bicycling or equestrian use. The small size of the sanctuary and proximity to homes and roads make it unsuitable for youth group camping. No Americans with Disabilities Act access is planned at this time due to the considerable resources required and the environmental impacts to the site. *Dicerandra thinicola* is an endangered plant that occupies open sandy areas and therefore trails will need to be limited to prevent impacts by visitors.

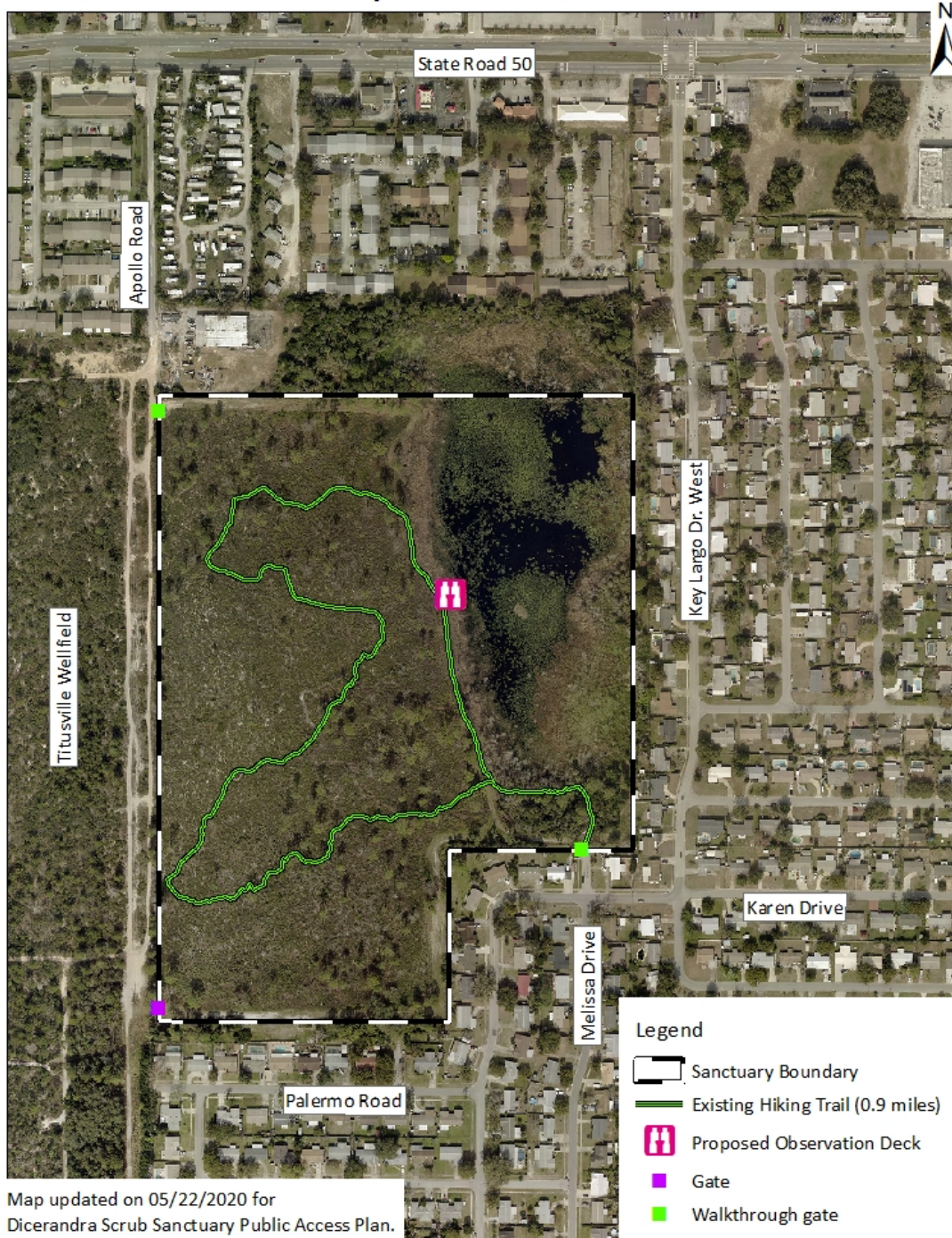
Environmental Education Opportunities

Access to scrubby flatwoods and wetlands, rare plant species, and a relatively short trail offer opportunities for educational hikes and interpretive trail signage. Interpretive trail signage topics could include habitat restoration, fire management, threatened species, and natural history. *Dicerandra thinicola* is an endangered plant and is the only endemic plant species of Brevard County.

It is only found in the northern section of the county, and therefore it will be a focal point of environmental education at the sanctuary.

Figure 1

Dicerandra Scrub Sanctuary Proposed Access Plan



[Link to Recreational Uses and Amenities](#)

[Link to Figure 1 Descriptive Text](#)

Figure 1 Descriptive Text

The satellite image map is an aerial view of the Dicerandra Scrub Sanctuary in southeastern Titusville, Florida. The sanctuary is located .16 miles south of State Road 50 and directly east of the Titusville Wellfield. The southern boundary is bordered by Palermo Road and Karen Drive extending east to the back of the private properties along Key Largo Drive West. There is a gate located on the southwestern corner of the property to enter the sanctuary from Titusville Wellfield. There are also walkthrough gates located at the northwestern corner of the property off Apollo Road, and the southeastern side of the property off of Melissa Drive. A 0.9 mile existing hiking trail can be accessed from the walkthrough gate off of Melissa Drive. The trail enters and exits from the same access point with a loop on the western half of the sanctuary. There is a proposed observation deck located along a northeastern portion of trail that borders a pond located on the sanctuary.

[Return to Figure 1](#)