



# Habi-Chat

Newsletter of the Merritt Island Wildlife Association

Volume 11, Number 4

Winter 2005



**Sunrise and Shuttle Launch Pad on the Refuge.**  
Photo by Joel Reynolds

## Not Again – More Hurricane & Road Damage

This hurricane season was not nearly as bad for us as the 2004 season, but it did the same kind of damage to Refuge roads and trails. Hurricane Wilma brought 8 inches of rain, but only 50 mph winds. The prevailing northeasterly winds piled up water in the southern end of Mosquito Lagoon pushing several feet of water over Bio Lab Road and Max Hoeck Creek and causing extensive erosion. Bio Lab Road was closed for several weeks while debris was removed and the eroded sections of the road repaired. Much of the road shoulder and some of the road width are still missing. Traffic can no longer safely pass along some sections of the road and it is now designated one way from north to south until permanent repairs are made. Wilma also took out a 50 foot section of Catfish Creek dike and the road is still closed for repairs.

The storm blew down numerous limbs and trees and much of Oak and Palm Hammock trails were underwater for several weeks following the storms. Both trails are now open, but the boardwalks need replacing. With so much relief going to the Gulf coast following Hurricane Katrina, storm funding was in short supply for Florida. Funding was obtained to repair Oak Hammock Trail, but not Palm Hammock. With the extensive network of boardwalks on Palm Hammock and the shortage of staff, the decision was made to permanently close Palm Hammock Trail this season. Repairs will be made on Oak Hammock Trail starting in January.

Fortunately, most other Refuge dike roads were spared. The 12-mile Shiloh Marsh Road, which suffered extensive storm damage in 2000 and 2004, was largely untouched by Wilma. The good news is that this road will finally open in mid February after an extended 2 ½-year closure. Refuge maintenance crews are finishing the installation of rip rap on L Pond Road and when completed this winter, it will be open after more than a year of storm repairs. Both roads will provide excellent wildlife viewing and bank fishing opportunities.

Let's keep our fingers crossed, that we are through with these storms!

**Dorn Whitmore, Refuge Operations Specialist**

## MIWA Annual Meeting

The 2005 Annual Meeting was well attended and action-packed. Approximately 96 members attended and were treated to a full agenda of reports and presentations. MIWA President Dan LeBlanc welcomed members and spoke briefly on the night's agenda. Dan gave the floor to Board Member and Nomination Committee Chair George English for the Board of Director's officer and member nominations. All current board members whose terms expired this year have agreed to serve for another two-year term. Officers nominated are listed:

<b>Dan LeBlanc</b>	<b>President</b>
<b>Lee Solid</b>	<b>Vice President</b>
<b>Jim Pedersen</b>	<b>Treasurer</b>
<b>Joel Reynolds</b>	<b>Secretary</b>

Judy Dryja nominated Dan Click to serve as a new board member. Afterwards, George asked for additional nominations from the floor. None were presented. A vote was taken and all board member and officer nominations were approved unanimously. (Continued on Page 6)



**Blue Heron on Palm Tree.**  
Photo by Joel Reynolds

### 4<sup>th</sup> Annual Brevard Watercolor Reception A Great Success

The Brevard Watercolor Society and MIWA held the 4<sup>th</sup> Annual Watercolors of Wild Things Art Exhibition" reception on Sunday, November 13<sup>th</sup>. Over 90 art lovers attended and were treated to beautiful watercolors; acoustic guitar music by Refuge Supervisory Forester, Fred Adrian; wine; and refreshments. The Best of Show award went to Kiki Davidow for her beautiful piece "Nesting Time", with 1<sup>st</sup> Place Fauna awarded to Victoria Pruitt Limberis for "Endangered" and 1<sup>st</sup> Place Flora awarded to Therese Ferguson for "Catus at Playalinda". Merit awards were also awarded to artists Darleen Hunt, Jo Ewald, Janice Nairn, Nancy Sadowski and Kaye Shannon. All watercolors are available for purchase at the VIC with a portion of the proceeds going to MIWA. The exhibition will be on display through January 2006.

Thank you to volunteers Betty & Cary Salter and Bev Campbell for their hard work setting up and manning the event.

**Sandee Larsen, Bookery Manager**  
Photos by Jesse Wagner



Artist Darleen Hunt



Volunteer Betty Salter



Admiring the Watercolors



Musician Fred Adrian



*The purpose of the Merritt Island Wildlife Association is to promote conservation, awareness, and appreciation of the Merritt Island National Wildlife Refuge and to provide assistance to Refuge programs.*

<b>President</b>	Dan LeBlanc
<b>Vice President</b>	Lee Solid
<b>Treasurer</b>	Jim Pedersen
<b>Secretary</b>	Joel Reynolds
<b>President Emeritus</b>	George English

#### Board Members

Sam Beddingfield, Jim Butts, Warren Camp, Dan Click, Judy Dryja, Chris Fairey, Bud Ferguson, Darleen Hunt, Robert Hutchison, Forrest McCartney, Lorenz Simpkins, Ned Steel, Laurilee Thompson, Ron Thorstad, John Tribe

**Refuge Manager** Ron Hight    **USFWS Liaison** Dorn Whitmore  
**NASA Liaison** Mike Sumner

The Merritt Island Wildlife Association (MIWA) is a nonprofit, cooperating association for the Merritt Island National Wildlife Refuge. The *Habi-Chat* is published quarterly. For MIWA information, call **321-861-2377**.

**Newsletter Editor** Brad Sloan    **Technical Consultant** Sandee Larsen  
**Habi-Chat Committee** Brad Sloan, Sandee Larsen, Dorn Whitmore

## Thank You to Our Corporate Sponsors

Allen Engineering  
 Animal Clinic, R.E. George, D.V.M.  
 Black's Spray Service  
 Coldwell Banker Cornerstone Realty  
 Comprehensive Health Services, Inc.  
 Courtyard Cocoa Beach  
 Delaware North Parks and Resorts  
 Dixie Crossroads Restaurant  
 Ear Care, P.A.  
 Fun Day Tours  
 Halifax River Audubon Society  
 Hampton Inn Cocoa Beach  
 Ivey's Construction  
 Rodney S. Ketcham, Inc.  
 L & D Consulting  
 Tom & Sunshine Luce  
 Norman Ray  
 Space Coast Audubon Society  
 TLC Engineering  
 United Space Alliance



## MIWA 2005 Accomplishments



### Black Point Wildlife Drive Enhancement Project Grant:

- Acquired In-Kind Pledges of 1,263 Hours for Matching Grant
- Received Signed Agreement from National Fish & Wildlife Foundation
- Requested and Received Additional Donations of \$5,218.60
- Featured Article in Local Newspaper, Florida Today

### BioLab Rescue Project:

- Pledged \$5,000 in Funds for Improvements
- Cleaned Out Building
- Requested & Received Used Furniture & Maintenance/Repair Labor

### Programs:

- Rue Photo Seminar
- Annual Brevard Watercolor Society Art Exhibition
- Refuge Volunteer/MIWA Member Art Exhibition
- Attended the Annual National Friends Conference in Washington, DC
- Attended the Florida Friends Conference at the Loxahatchee NWR, FL

### Acquired:

- \$5,000 Membership Grant from National Fish & Wildlife Foundation
- DR Power Wagon for the Refuge Trail Maintenance Program through Donation from Winnie Lambert
- Annual Meeting Silent Auction Items from Area Business Leaders through Donations (see Page 6)
- Autographed Publications by Authors: Pete Dunn; Ray E. Ashton, Jr.; David Gluckman; and Arthur Morris

### Donated:

- Door Prizes for the Mosquito Lagoon and National Criminal Enforcement Association Winter Conferences
- Manatee Pins, Materials, and Funds for the Junior Refuge Ranger Program
- \$100 to the Cape Canaveral Lighthouse Foundation
- Used Furniture from BioLab to SPCA
- Luncheon Funds for RSVP Volunteer Program

### Funded:

- 3 Lake Wales Ridge NWR Clean-Ups
- 2 Community Leaders' Luncheons
- Volunteer Wildflower Training Program
- VIC Renovation Project
- Volunteer Historical Program
- VIC Garden Project
- Annual Refuge Scrub-jay Survey
- Refreshments for 2 Teacher's Workshops
- VIC Purple Martin House Project (Predator Guard)
- National Wildlife Refuge Week Events
- Lunch for Volunteer Fall Social to the Ponce Inlet Light House and Marine Science Center
- Luncheon for Brian Waidman, Chief of Staff for Secretary Norton, DOI
- Lunch for Lynn Scarlett, Assistant Secretary, DOI



- Refreshments for USFWS SE Region's Refuge Manager Town Hall Meeting
- Lunch for Staff from the State Attorney's Office
- Annual Audubon Christmas Bird Count at Refuge

### Refuge Support:

- Sponsored Spring Volunteer Awards Boat Tour
- Sponsored Annual Welcome Back Songbird Festival
- Co-supported the Refuge Intern Program
- Solo Manned the VIC Desk for 332 hours

### Other MIWA Projects:

- *Habi-Chat* Quarterly Newsletter
- MIWA Annual Members' Meeting
- Space Coast Birding & Wildlife Festival Booth Sales
- New Website & Online Store

### Member's Only Field Trips:

- Canaveral National Seashore North District Tour
- Cape Canaveral Light House Tour
- Refuge History Tour
- Sea Turtle Walk



## Volunteer Field Trip - A Delight

Each fall, the Merritt Island NWR and MIWA host a fall get-together for the refuge volunteers. This year's destinations were the Ponce DeLeon Inlet Lighthouse and Volusia County Marine Science Center. What a day we had! The weather was beautiful, travel was easy, and the destinations were a delight. We cruised in style in a NASA bus graciously provided by MIWA President Dan LeBlanc, Director of the Delaware North KSC Visitor Complex.



### Volunteers at the Lighthouse

rehabilitation facility, which is fully equipped to care and treat injured and sick birds. Upon full recovery, both birds and turtles are released back into their natural habitat. Chris Wise, a long-time refuge volunteer, runs the sea bird hospital.

We received free entry and guided tours, and MIWA provided the lunch. What a treat! A great big thank you goes out to the staff and volunteers of the Lighthouse and the Marine Science Center.

**Nancy Corona, Refuge Ranger**

We enjoyed a tour of the 1887 lighthouse and the keepers' facilities, learning much about the history of the area and the lifestyle of the keepers and their families. Many of us climbed 175 feet to the top and our efforts were rewarded with a spectacular view. We recovered during lunch at a local restaurant and enjoyed a picture window view of the Halifax River and its bird life.

After our rest, we traveled a short distance to the Marine Science Center and participated in a guided tour of the sea turtle and bird rehabilitation facilities. We observed the turtle hospital pools from the Turtle Terrace, learned about the threats to sea turtles, and learned about present conservation efforts. The pools house sick and injured sea turtles and hatchlings that are under rehabilitation. We toured the bird

## 2005 Sea Turtle Nesting Summary

The 2005 sea turtle nesting season improved from 2004: the number of nests and false crawls of the three main species of sea turtles, *Caretta caretta* (loggerhead), *Chelonia mydas* (green), and *Dermochelys coriacea* (leatherback), were up from the 2004 season. This was especially encouraging, since the trend has been decreasing numbers over the last few years. Overall in 2005, a total of 881 nests were found. The actual number of the nests is higher, due to parts or the entire beach being closed periodically due to NASA's hazardous operations and launches.

### ◇ Loggerhead (*Caretta caretta*):

695 loggerhead nests were found this year, as well as 809 false crawls. Our marking scheme for loggerhead nests this year was to mark every 10<sup>th</sup> nest. There were 70 loggerhead nests marked this year with only 51 surviving. 19 nests were lost due to named storms (Ophelia and Wilma), three nests were depredated by raccoons, and five were depredated by ghost crabs.

### ◇ Green (*Chelonia mydas*):

183 green nests and 258 green false crawls were found this year. Our marking scheme for green nests was to collect data on every other nest. 84 green nests were marked this year. Of the 84 marked nests, only 53 survived the year's storms. 31 nests were lost due to named storms (Ophelia and Wilma), three nests were depredated by ghost crabs, and 1 nest was depredated by a wireworm (click beetle larvae).

### ◇ Leatherback (*Dermochelys coriacea*):

Three leatherback nests were found with one false crawl. We marked every leatherback nest we found due to the extremely low numbers of leatherback sea turtles. Not one of the found leatherback nests was depredated or lost because of storms.

**Mike Simmons, Refuge Bio-Tech**



**Green and Leatherback Sea Turtle Hatchlings.**

**Photo by Mike Simmons**





*Hello to...*

...**Jimmy Laurent**, the new Refuge Operations Specialist. From Slydell, LA, Jimmy now lives in Port St. John with his wife

and two dogs. He has a Bachelor's Degree in Biology with a concentration in Wildlife. He aims to eventually assist in refuge management in Louisiana.

...**Stephanie Odom** of Titusville. She is a temporary Office Administrator for the Refuge and has previously worked as a Secretary for Boeing and Dynamac. Stephanie has three children, two daughters and one son and wants to get a degree in Business Administration.

...**Audrey Preston** from Tybee Island, Georgia. She is our new Public Use Intern. Audrey has a Bachelor's Degree in Environmental Education and a double major in Spanish from Warren Wilson College in Ashville, North Carolina and plans to return to grad school some time next year.

...**Jesse Wagner**, Seasonal Sales Associate for the MIWA Bookery. Jesse comes to us from Vista, California. She received an Associate's Degree in Fashion Merchandising at Palomar College. Jesse would like to pursue either a career in fashion or return to college to continue her education.

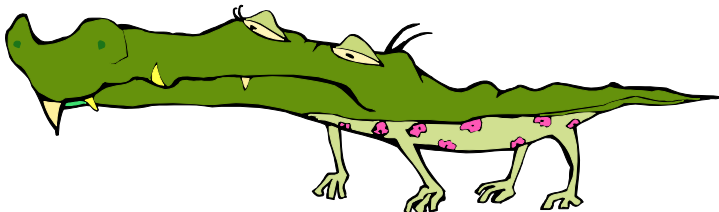
...**Jane Whaley**, the new full-time Law Enforcement Officer for the Refuge. With Bachelor's and Master's degrees in Biology, she has previously worked at the Piedmont and Bond Swamp National Wildlife Refuges in Central Georgia. Once she gets oriented to Merritt Island NWR, Jane intends to spend a lot of time fishing and exploring with her husband Jeremy and yellow lab, Chance.

*Hello and Goodbye to...*

...**Shane McMillen**. Shane was the Public Use Intern for the Fall. Originally from Titusville, he attended Evergreen State University in Olympia, Washington, earning a Bachelor's Degree in Environmental Science. In the future, Shane hopes to work in Environmental Law Enforcement.



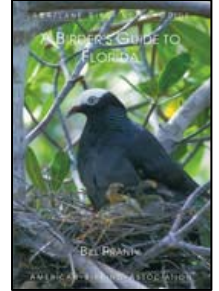
**Shane McMillen.**  
Photo by Nancy Corona



*Bookery Buys*



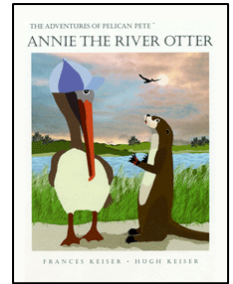
*A Birder's Guide to Florida*  
by Bill Pranty.....\$25.95  
The new must have for birders! This bird finding guide and field guide is all you will need to find common or elusive species in Florida.



*Florida Birds Second Edition*  
by David S. Maehr & Herbert W. Kale II.....\$21.95  
This updated guide contains 348 species' accounts and contains sections on bird study, habitats, and conservation.

*30 Eco Trips in Florida*  
by Holly Ambrose.....\$19.95  
The perfect guide for finding authentic, high quality, less-trafficked adventures in Florida.

*Annie the River Otter*  
by Frances Keiser.....\$17.00  
The 4<sup>th</sup> book of the Pelican Pete series, a great book for children. A delightful story of wildlife rehabilitation and conservation.



**MINWR Celebrates National Wildlife Refuge Week**

The celebration to kick off National Wildlife Refuge Week took place at the VIC on October 13, 2005. Activities and programs made available to the public included Optics 101, Beginning Birding Tour, Backyard Wildlife Habitat, Snakes Alive, Kids Nature Crafts, and Wild Manatee Encounter. We would like to thank Cary Salter, Al Brayton, John Boucher, Buddy Grout, Hubie Jacques, and all the other volunteers who participated in this event.

**Shane Mcmillen, Public Use Intern**

*Habi-Chat* now has email! If you would like to be on our mailing list to receive MIWA announcements, please add us to your safe senders list and send a request to **HabiChat@MerrittIslandWildlifeAssociation.org** This mailing list is being started from scratch, so even if you have received notices in the past you will not be on the new list unless you make a request.



Neil Fifer signing books at the Festival.  
Photo by Joel Reynolds

## Space Coast Birding & Wildlife Festival

MIWA participated in the annual Space Coast Birding & Wildlife Festival held November 16<sup>th</sup> through 20<sup>th</sup>. Our booth provided Refuge info; hosted book signings; and sold nature-oriented books, shirts, hats, and audio tapes. Visitors shopped and mingled, resulting in sales of over \$3,700, topping previous booth sales! Thank you to all who purchased and visited the booth. A big THANK YOU to volunteers: Trudy Metsger, Bob Kriedler, Dan Witmer, Bev Campbell, and Mel & Dot Fringer for co-manning the booth and to Ed Larsen and Betty & Cary Salter for assisting in set up and break down. See you at next year's event!

**Sandee Larsen, Bookery Manager**

### MIWA Annual Meeting (Continued from Page 1)

The remainder of the evening consisted of a presentation on the Indian River Dolphin by Steve McCulloch of the Harbor Branch Oceanographic Institution; MIWA Treasurer's Report by Jim Pedersen; Refuge Update by Refuge Manager, Ron Hight; BPWDEP Update by Warren Camp; MIWA Membership Drive Update by Chris Fairey; Upcoming Field Trip Report by Dorn Whitmore; Space Coast Birding & Wildlife Festival Update by Laurilee Thompson; Brevard Watercolor Society Art Event by Darleen Hunt and Kiki Davidow; Bio Lab Rescue Project Update by Judy Dryja; and a presentation, "Beautiful Birds, Beautiful Music", by Kevin Doxstater.

During the evening appetizers were served, door prizes were awarded, and silent auction items were up for bids. The evening ended with silent auction items being awarded. Over \$1,200 in funds was donated through the auction and will be earmarked for environmental education programs. Thank you to all who attended, donated items, and participated in the silent auction! And a big thank you to Dixie Crossroads for hosting the event!

**Sandee Larsen, Bookery Manager**

#### Steve McCulloch and Dolphin.

Photo courtesy <http://dive.scubadiving.com/>

To help Indian River Lagoon dolphins, make donations earmarked for Maine Mammal Rescue to the Harbor Branch Oceanographic Institute, 5600 US 1 North, Ft. Pierce, FL 34946



### THANK YOU TO ALL OUR SILENT AUCTION DONATORS AND WINNERS:

- |                                       |   |
|---------------------------------------|---|
| George English                        | Hand-Knitted Poncho donated by <b>Betty Camp</b><br>Ceramic Florida Scrubjay Tile Work donated by <b>Warren Camp</b><br>Framed Original Watercolor Print donated by <b>Peter Bailey</b><br>Audobon Framed Print donated by <b>Mel Fringer</b><br>Common Loon Print donated by <b>Mel Fringer</b><br>Stained Glass Sailboat donated by <b>Jim Butts of Jim's Dollhouse and Gifts</b><br>Hand-Painted Silk Scarf donated by <b>Darleen Hunt</b> |
| Howard Davidow:                       | Four Maximum Access Passes to KSC with Lunch with an Astronaut donated by <b>Dan LeBlanc, DNPS</b><br>Guided Half Day Fishing Trip donated by <b>Captain Mark Wright</b><br>MINWR CD donated by <b>Marge Bell</b>   |
| Ron Hight:                            | Framed Wood Duck Print donated by <b>Mel &amp; Dot Fringer</b>  |
| Dan LeBlanc:                          | Eco/Family Fishing Tour donated by <b>Captain Shawn Exline Indian River Experience</b>  |
| Bob Armbruster:                       | Great Blue Heron Matted Photo donated by <b>Joel Reynolds</b>   |
| Donna Ronco:                          | Autographed Copy of "All American Boys" donated by <b>Dan LeBlanc</b>   |
| Edward Larsen:                        | Matted Hooded Merganser Photo donated by <b>Joel Reynolds</b>   |
| Audrey Smith:                         | Nature Boat Tour for Two donated by <b>Doug Floyd</b>   |
| Terry Ark:                            | Half Day Chartered Fishing Trip donated by <b>Captain Troy Perez</b>  |
| Jim Clark:                            | MINWR CD donated by <b>Marge Bell</b>   |
| Jack Juba:                            | Embroidered Long Sleeved Denim Shirt donated by <b>Judy Dryja</b>   |
| Mary Ann Theis:                       | Hand Painted Queen Palm Frond donated by <b>Sonia Larson</b>  |
| Cheri Ehrhardt:                       | Half Day Charter for Two Anglers donated by <b>Captain John Turcot</b>  |
| Dorn Whitmore:                        | Half Day Guided Redfish Trip for Two donated by <b>Captain Larry Fowler</b>   |
| Mel & Dot Fringer<br>and Warren Camp: | Half Day Guided Fishing Trip for Three donated by <b>Captain Neal Goodrich</b>  |
| Dot Fringer:                          | Kayak Tour for Two donated by <b>A Day Away Outfitters</b>  |





**Visitor Information Center Hours**

Monday through Friday  
8:00 am – 4:30 pm

Saturday and Sunday\*  
9:00 am – 5:00 pm

\*VIC is closed Sundays from April-October

The Refuge is open daily from Sunrise-Sunset,  
except during Shuttle Launch/Landing operations.



**Christmas Bird Count a Success  
in Spite of Weather**

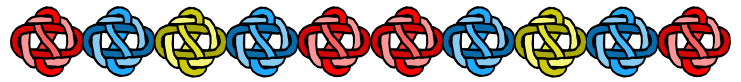
The 35<sup>th</sup> annual MINWR Christmas Bird Count was held on Monday, Dec. 19<sup>th</sup>. About forty brave souls gathered at the VIC for our 5:30 am start (actually, two teams looking for owls were out by 3:00 am). The wind was *really howling* and it was *cold* out there when we got to the parking lot. We knew that we were in for a long and difficult day. In spite of the terrible weather, we managed to spot a remarkable 165 species by 6:30 pm. The Refuge count has been held almost every year since about 1970 (launch and security issues cancelled one or two). This high number of observed species will place us in the top 2 or 3 wildlife refuge counts in the country. We had a First Time Ever for this year's count: white-winged doves (about 50) were well documented by one of our teams.

Our treasurer Jim Pedersen and I would like to thank all those folks who participated in this year's count. Many of these great birders traveled far to help make this a super day for the Refuge! We also especially thank board members Judy Dryja and Dan Click for the excellent job they did running this count for the last 10 years or so.

**Ned Steel, MIWA Board Member**



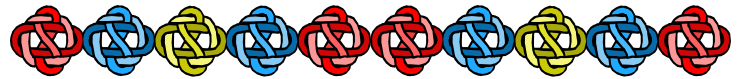
**Birders Enjoying the Refuge.**  
Photo by Joel Reynolds



*Gifts in Remembrance of  
William (Bill) Creedon were donated by:*  
**Gary & Stephanie Doty  
Lucy & John Horsch  
Elaine Mahnke of  
Island Title & Escrow Corp.  
Jim & Lori White**

*Bill spent many hours at the Refuge and shared  
his love of nature with friends and family.  
Additional funding for a memorial bench  
in Bill's honor has been donated by  
**Margie Creedon.***

*Donations in remembrance of loved ones and friends  
can be sent to:*  
**MIWA, P.O. Box 6504, Titusville, FL 32782**



**Merritt Island Wildlife Association**

*Supporting the Merritt Island National Wildlife Refuge*  
Joining is simple. Just fill out this form and mail it to the Merritt Island Wildlife Association at P.O. Box 6504, Titusville, FL 32782 or join online at [www.MerrittIslandWildlifeAssociation.org](http://www.MerrittIslandWildlifeAssociation.org).

**Name** \_\_\_\_\_

**Address** \_\_\_\_\_

**City** \_\_\_\_\_ **State** \_\_\_\_\_ **Zip** \_\_\_\_\_

**Phone Number** \_\_\_\_\_

**Email** \_\_\_\_\_

Type of Membership:

- Seniors and Students** – \$10
- Individual** – \$15
- Senior Couples** – \$15
- Family Membership** – \$20
- Supporting Membership** – \$50
- Senior Couple Supporting** – \$75
- Life Membership** – \$250
- Patron** – \$1000
- Optional** – Donation \$ \_\_\_\_\_

**Total Enclosed** \_\_\_\_\_

Make checks payable to MIWA. For credit card payments please call the MIWA office at **321-861-2377**.

## Upcoming MIWA Members-Only Field Trips

### MINWR HISTORICAL TOUR

**Trip Leader:** Dorn Whitmore

**9 am-4 pm**

**Saturday, January 14, 2006**

**Group Limit: 30**

**Food: Bring Lunch (Drinks Provided)**

**No Cost**

**Transportation Provided by Refuge**

Tour will visit the Douglas Dummitt Homestead, Fort Anne, Old Haulover Canal, Sugar Mill Ruins, and several Indian Mounds. Be prepared for bugs, rough terrain, and several 20 minute hikes.

### LAKE WALES RIDGE NWR

**Saturday and Sunday, February 11 & 12, 2006**

**Trip Leader:** Dorn Whitmore

**Group Limit: 20**

**Food: Lunch Sat. & Sun.**

**Accommodations: Archbold Biological Station**

**Transportation Provided**

**(includes room and 2 meals) Total Cost Approx. \$60**

This will be an over night trip to visit the first refuge established for endangered plants. Leave Merritt Island NWR at 8 am and drive to Tiger Creek Nature Preserve for a guided walk and lunch at a local restaurant. Continue south and arrive at Archbold Biological Station for a hike lead by the ABS Director. Sunday, stop at Bok Tower Gardens for tour and lunch before returning to MINWR around 4 pm.

### LAKE WOODRUFF NWR

**Saturday, March 18, 2006**

**Trip Leader:** Dorn Whitmore

**8 am-4 pm**

**Group Limit: 30**

**Food: Pancake Breakfast, Bring Lunch (Drinks Provided)**

**Approx. \$26**

**Transportation Provided by Refuge**

Meet at the Publix parking lot on SR 406 at 7:45 am and leave promptly at 8 am. Drive approximately one hour to DeLeon Springs State Park for pancake breakfast at the Sugar Mill Restaurant. After breakfast we will take a pontoon boat tour of the waters of Lake Woodruff NWR to view bald eagles, osprey, limpkins, and many species of wading birds. Afterwards we will have a brown bag lunch and hike a 1.5-mile trail to see waterfowl and wading birds before returning to the Publix lot.

*For Trip Reservations contact the MIWA Office at 321-861-2377*

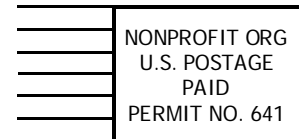


Merritt Island Wildlife Association

P.O. Box 6504

Titusville, FL 32782

[www.MerrittIslandWildlifeAssociation.org](http://www.MerrittIslandWildlifeAssociation.org)



Free Beginning  
Birding Tours Thurs,  
Sat, Sun 9 am at the  
VIC. For information  
call (321) 861-0668.

